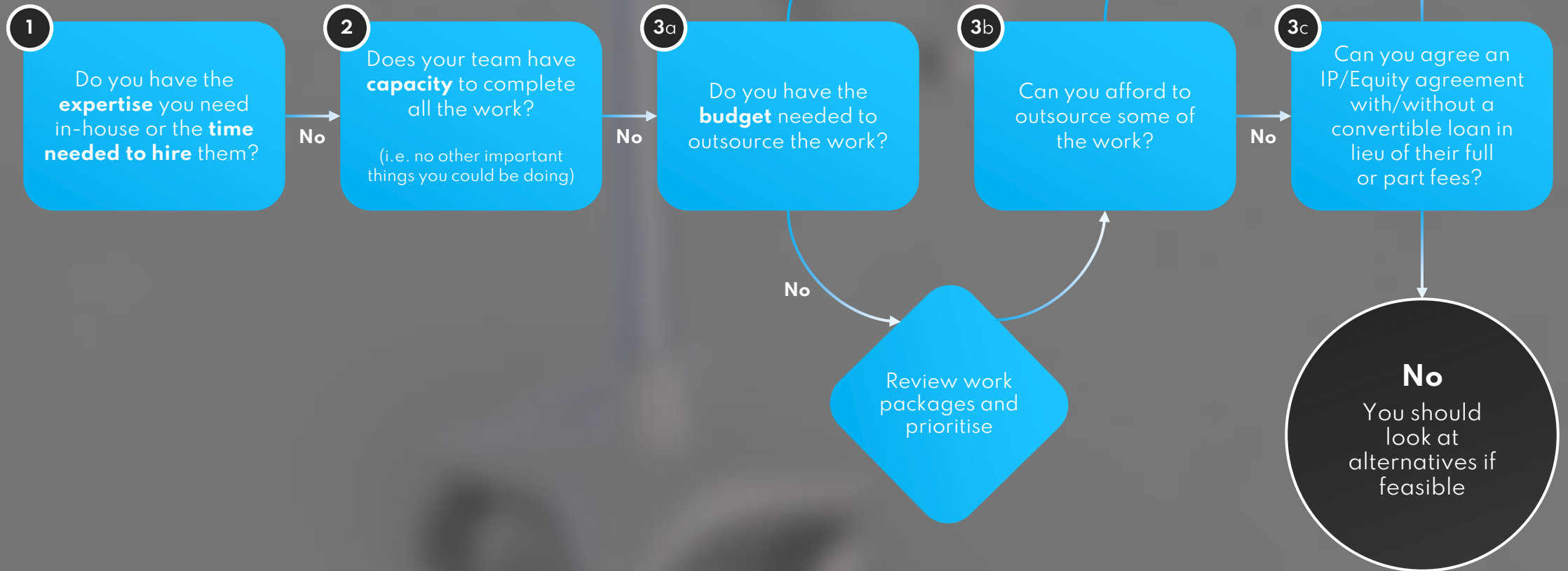




Should I outsource my product design work?

i4PD's guide to a decision-making workflow

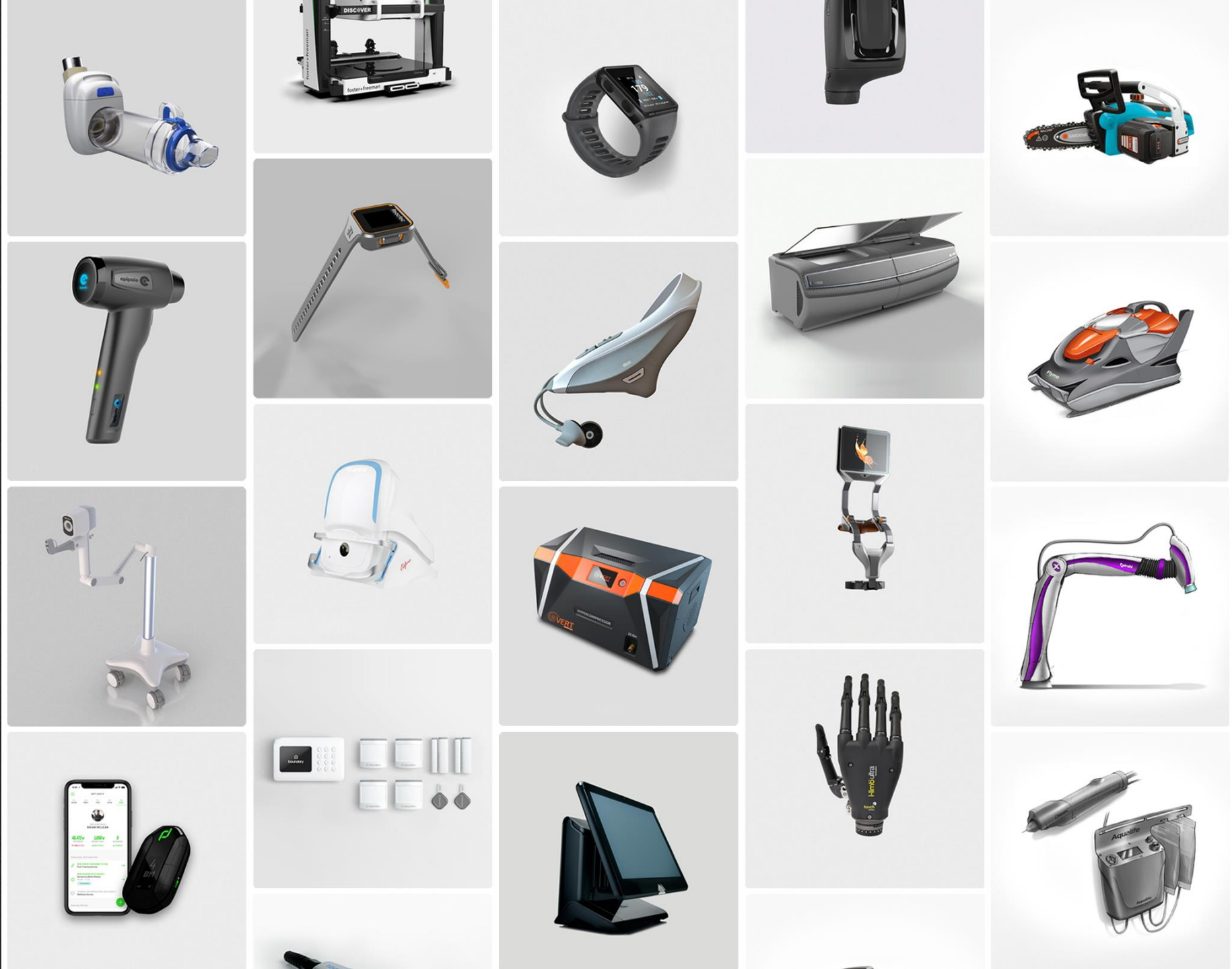




Pro's and cons - cheat sheet

How do in-house, contractor and consultancy options stack up?

| Options | Cost | Equipment /facilities | Training | Quality Oversight | Back-ups | HR | Commitment | Peaks & Troughs | Focus |
|--------------------|--------------------|---|----------------------|----------------------|----------------------|----------------------|--|---------------------------------------|-------------------------------------|
| In-house | Lowest Cost | Your responsibility | Your responsibility | Your responsibility | Your responsibility | Your responsibility | 1 month notice period. Can't be "paused" | Poor | Solely focused |
| Contractor | 2nd Lowest | Your responsibility | None required | Your responsibility | Your responsibility | None required | Typically committed to a # of months | Poor – good ones are rarely available | Generally solely focused |
| Consultancy | Most Costly | Will be provided (to a varying degree) | None required | None required | None required | None required | Phase by phase commitment - Can be paused | Good | May or may not depending on project |



i4 Product Design Ltd

We integrate, augment or act as a turnkey development partner.

Contact us to discover how i4 Product Design can help to solve your current design challenges and take your product to the next level.

www.i4pd.co.uk

designing the future together

i4 Product Design
+44 (0) 131 448 2266
enquiries@i4pd.co.uk
www.i4pd.co.uk